



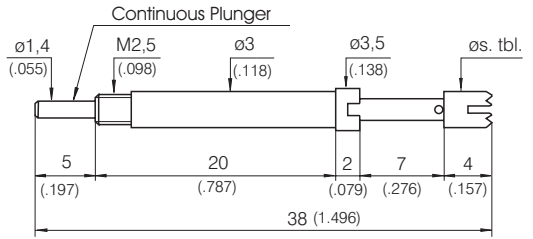
Screw-in Test Probe with continuous Plunger
 Installation Height: 13,0 mm (.512)
 Recommended Stroke: 5,6 mm (.220)

Grid:
 ≥ 4,50 mm
 ≥ 177 Mil

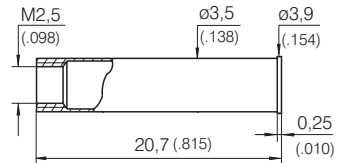
GKS 500 M

Available Tip Styles				
Material	Tip Style	Standard Plating	Special Versions	
			Ø	(Ø inch)
3	06 	A	Ø 3,00 (.118)	
3	06 	A	Ø 4,00 (.157)	

Mounting and Functional Dimensions



GKS-500 M



KS-500 M2,5

Mechanical Data

Working Stroke: 5,6 mm (.220)
 Maximum Stroke: 7,0 mm (.276)
 Spring Force at Work. Stroke: 1,5 N (5.4oz)
 alternative: 3,0 N (10.8); 5,0 N (18.1oz)

Collar Height and Installation Height

The Installation Height of the Tip is always 13,0 mm (.551).
 The Test Probe can only be used with a Receptacle.

Collar Height	Installation Height
02	13,0 mm (.512)

Electrical Data

Current Rating: Connection to Plunger: 12-15 A
 Connection to Recep.: 5-8 A
 R_i typical: Connection to Plunger: < 10 mΩ
 Connection to Recep.: < 30 mΩ

Mounting Hole Size

in CEM 1 and FR 4: Ø 3,49 mm (.1374)

Materials

Plunger: BeCu, gold-plated
 Barrel: Brass, gold-plated
 Spring: Steel, gold-plated
 Receptacle: Brass, gold-plated

Note to GKS - 500 M and KS - 500 ... M

GKS-500 M are screwed into KS-500 M 2,5 using a normal screwdriver.

Recommended Screw-in Torque: Maximum 20 Ncm

Ordering Example:

Series	Tip Material 3 = BeCu	Tip Style	Tip Diameter (¹ / ₁₀₀ mm)	Plating A = Gold	Spring Force (dN)	Collar Height (mm)	Typ
--------	--------------------------	-----------	---	---------------------	----------------------	-----------------------	-----

Test Probe:

G K S 5 0 0 3 0 6 3 0 0 A 1 5 0 2 M

Receptacle:

K S - 5 0 0 M 2,5

Tool for Screw-in Probe:

normal screwdriver

All specifications are subject to change without prior notification