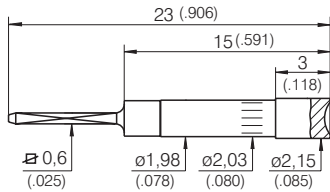
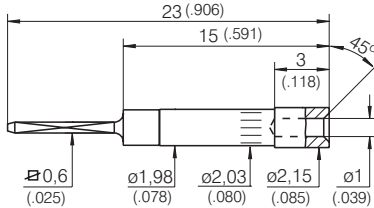


Contact Terminals with
Collar Height: 3 mm (.118)

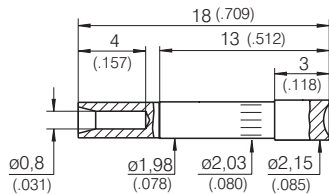
KT-254 W-E03 (wire-wrap)



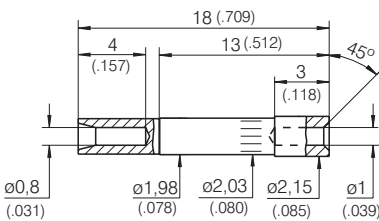
KT-254 W3 E03 (wire-wrap)



KT-254 L-E03 (Solder)

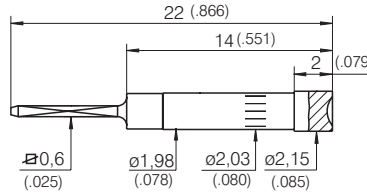


KT-254 L3 E03 (Solder)

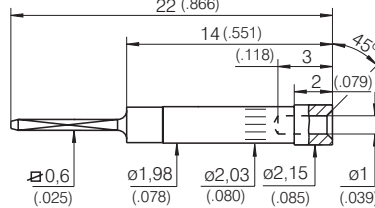


Contact Terminals with
Collar Height: 2 mm (.079)

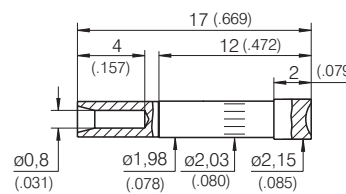
KT-254 W-E02 (wire-wrap)



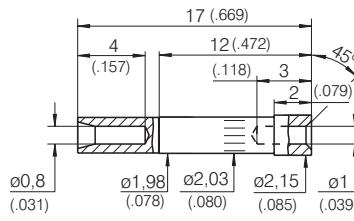
KT-254 W3 E02 (wire-wrap)



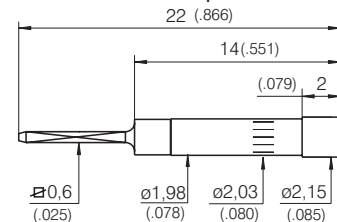
KT-254 L-E02 (Solder)



KT-254 L3 E02 (Solder)

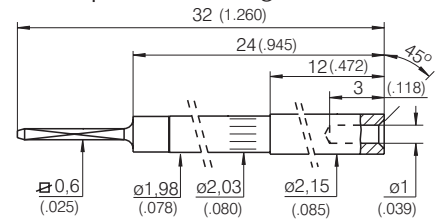


KT-254 W-PL (wire-wrap)

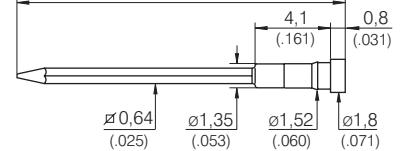


Other Contact Terminals

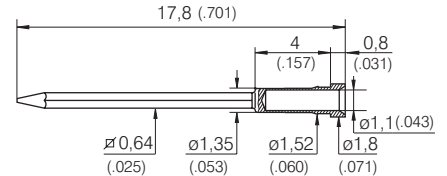
KT-254 W3 E12 (wire-wrap)
For assembly in INGUN-ZSK Transfer Field
(ZSK = Top-side Contacting Unit)



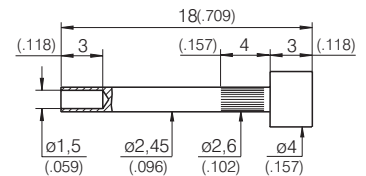
KT-158 02 (Order No. 9408)
Contacting Terminal for GenRad Interface



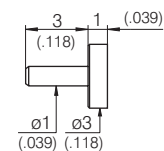
KT-158 (Order No. 3650)
Contacting Terminal for Zehntel Interface



KT-586 102 400 R
Contacting Terminals for general usage



KT-279 102 300
(to solder in)



Electrical Data

R_i typical: < 5 m Ω

Material

Contact Terminals: Brass, gold-plated
KT-586: Brass, rhodium-plated

Note:

We recommend that all INGUN VIN/ATS-Interfaces use the Contact Terminal type KT-254 W3 E03 and the Test Probe series GKS-912 207 150 A 1502.

Collar Height and Installation Height for KT-254

The Installation Height of the Contact Terminals is determined by the Collar Height.

Collar Height	Installation Height
02	2,0 mm (.079)
03	3,0 mm (.118)
12	12,0 mm (.427)

Mounting Hole Size for KT-254

in CEM 1: Ø 1,98 - 2,00 mm
(.0780 - .0787)

in FR 4: Ø 1,98 - 1,99 mm
(.0780 - .0783)

Mounting Hole Size for KT-158

in CEM 1 / FR 4: Ø 1,40 mm (.0551)

Mounting Hole Size for KT-586

in CEM 1 / FR 4: Ø 2,55 - 2,57 mm
(.1004 - .1012)

Ordering Example:

Contact Terminal:

KT-254 W-3 E03